



## Daedalus Park at Handley Chase

---

DAEDALUS PARK AT HANDLEY CHASE IS A CHARMING COLLECTION OF 2, 3 AND 4-BEDROOM HOMES IN THE HIDDEN GEM OF SLEAFORD, LINCOLNSHIRE.



## A community close to everything

Easy access to town, city and beyond

Daedalus Park at Handley Chase enjoys a wonderful semi-rural location that places you a stone's throw from Lincolnshire's stunning countryside, with beauty spots like Folkingham Castle and Culverthorpe Lake just a short drive away.

However, despite such rural tranquillity, there is a convenience store and a garden centre, farm shop and café, all a short walk away. Additionally, the charming Horseshoes village pub in nearby Silk Willoughby makes a great venue for unwinding with lunch, dinner or afternoon drinks.

For a little more choice, Sleaford's charming town centre is a five-minute drive away and puts all the essentials close at hand.



“ We had a really good experience with Ashberry and we would definitely recommend them to a friend.

**Charlotte and Michael**  
Ashberry Homes at Pirton Fields

## Discover Sleaford on your doorstep

Convenience of town life and open space

On market day, the town is a hive of activity with traders selling everything from fresh local produce to unique crafts and gifts. Take a seat at one of the characterful independent cafés that line the market square for the perfect place to watch the world go by.

Sleaford's rich history becomes evident with a visit to the historic castle ruins where you can enjoy a peaceful stroll along the picturesque Riverside Walkway. Alternatively, The Hub arts centre is a real cultural hotspot, hosting a variety of exhibitions, events and workshops. There is also a tempting selection of independent pubs and restaurants that cater for every palate.

For those who like to keep fit, the town's leisure centre, equipped with a gym, swimming pool and group exercise classes, ensures you can stay active year-round.

Families at Daedalus Park at Handley Chase benefit from access to well-regarded local schools. St Botolph's Church of England Primary is just a five-minute drive away and the Kesteven and Sleaford High School Academy is only nine minutes away.

For further education, Grantham College, a 24-minute drive from Daedalus Park at Handley Chase, offers a wide range of apprenticeships and courses, while universities in Lincoln, Nottingham and Leicester provide excellent opportunities for continued learning.

Daedalus Park at Handley Chase enjoys excellent road links via the A15, A17 and A52, making it easy to reach nearby towns like Grantham in 29 minutes and Newark in 36 minutes. For travel further afield, Sleaford Railway Station provides regular services to Lincoln, Peterborough and Nottingham, while East Midlands Airport offers international flights that put the world within easy reach.





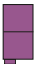




# Development Plan

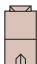


## 2 Bedroom Homes

 **The Lavender**  
Plots 131, 132, 133, 134, 135, 136, 215, 216, 217, 232, 233 & 234

## 3 Bedroom Homes


 **The Foxglove**  
Plots 109 & 294


 **The Veronica**  
Plots 110, 111, 115, 116, 204, 205, 209, 210, 242, 243, 248, 249, 253, 254, 255, 256, 257, 258, 292, 293, 307 & 308

 **The Alyssum**  
Plots 117, 214, 237, 242, 243, 251, 251, 286, 297, 300, 306 & 310

 **The Betony**  
Plots 112, 113, 114, 211, 212, 213, 235, 236, 288, 289, 290, 291, 302 & 303

## 4 Bedroom Homes

 **The Delphinium**  
Plots 245, 246, 259, 260, 295, 296, 298, 299, 245 & 246

 **The Ophelia**  
Plots 108, 120, 122, 203, 206, 208, 238, 239, 241, 244, 247, 249, 250, 252 & 287

 **The Honeysuckle**  
Plots 105, 107, 186, 207 & 240

 **The Albertine**  
Plots 106, 119, 121, 301 & 304

 **The Rose**  
Plots 118, 261 & 305

## 2-3 Bedroom Homes

 **Affordable Homes**

### Key to plan

v Visitor parking  
LEAP Local Equipped Area for Play

### Material Finishes

(HR) - Half render version

The site plan is drawn to show the relative position of individual properties. NOT TO SCALE. This is a two dimensional drawing and will not show land contours and gradients, boundary treatments, landscaping or local authority street lighting. Footpaths subject to change. For details of individual properties and availability please refer to our Sales Advisor.





The Lavender

2 BEDROOM HOME



The Lavender

2 BEDROOM HOME



Ground Floor

Kitchen/Dining	4.05m x 3.38m (max)	13'3" x 11'1" (max)
Living Room	2.95m x 4.85m (max)	9'8" x 15'11" (max)
Cloakroom	1.01m x 1.39m	3'4" x 4'7"



First Floor

Bedroom 1	4.05m x 2.72m	13'3" x 8'11"
Bedroom 2	4.05m x 2.40m (max)	13'3" x 7'10" (max)
Bathroom	1.90m x 2.36m	6'3" x 7'9"

Clks - Cloakroom    WS - Wardrobe Space (suggestion only, wardrobe not included)

The items shown in this key may be subject to change, and positions could vary from those indicated on this floorplan. Please refer to Sales Advisor for details of your selected plot. Computer generated image shown overleaf. External finishes, landscaping and configuration may vary from plot to plot. Please refer to Sales Advisor for further details. All dimensions are approximate and should not be used for carpet sizes, appliance spaces or furniture. We operate a policy of continuous improvement and individual features such as kitchen and bathroom layouts, doors, windows, garages and elevational treatments may vary from time to time. Consequently these particulars should be treated as general guidance only and do not constitute a contract, part of a contract or a warranty. LU/CB/500/S00/D/01/E.





The Alyssum

3 BEDROOM HOME



# The Alyssum

3 BEDROOM HOME



Ground Floor

Kitchen/Dining	4.79m x 3.49m	15'9" x 11'5"
Living Room	4.81m x 3.17m	15'9" x 10'5"
Cloakroom	2.03m x 1.42m	6'8" x 4'8"



First Floor

Bedroom 1	3.50m x 4.01m (max)	11'6" x 13'2" (max)
Bedroom 1 En Suite	1.20m x 2.83m	3'11" x 9'3"
Bedroom 2	2.55m x 4.59m	8'4" x 15'1"
Bedroom 3	2.15m x 3.49m	7'1" x 11'5"
Bathroom	1.94m x 2.20m	6'4" x 7'2"

Clks - Cloakroom    WS - Wardrobe Space (suggestion only, wardrobe not included)

The items shown in this key may be subject to change, and positions could vary from those indicated on this floorplan. Please refer to Sales Advisor for details of your selected plot. Computer generated image shown overleaf. External finishes, landscaping and configuration may vary from plot to plot. Please refer to Sales Advisor for further details. All dimensions are approximate and should not be used for carpet sizes, appliance spaces or furniture. We operate a policy of continuous improvement and individual features such as kitchen and bathroom layouts, doors, windows, garages and elevational treatments may vary from time to time. Consequently these particulars should be treated as general guidance only and do not constitute a contract, part of a contract or a warranty. LU/CB/500/S00/D/01/E.





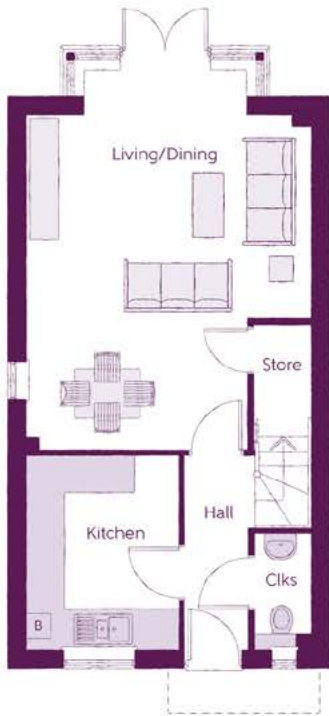
The Veronica

3 BEDROOM HOME



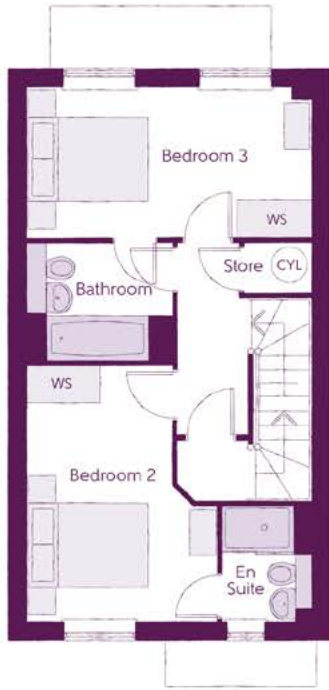
The Veronica

3 BEDROOM HOME



Ground Floor

Kitchen	2.50m x 3.17m	8'3" x 10'5"
Living/Dining	4.67m x 6.31m	15'4" x 20'9"
Cloakroom	0.92m x 1.90m	3'0" x 6'3"



First Floor

Bedroom 2	3.13m x 4.21m	10'3" x 13'10"
Bedroom 2 En Suite	1.45m x 1.90m	4'9" x 6'3"
Bedroom 3	4.67m x 2.47m (max)	15'4" x 8'1" (max)
Bathroom	2.38m x 1.92m	7'10" x 6'4"



Second Floor

Bedroom 1	3.63m x 4.87m	11'11" x 16'0"
Bedroom 1 En Suite	2.30m x 2.28m (max)	7'7" x 7'6" (max)
Dressing	2.27m x 2.28m	7'5" x 7'6"

Clks - Cloakroom    WS - Wardrobe Space (suggestion only, wardrobe not included)

The items shown in this key may be subject to change, and positions could vary from those indicated on this floorplan. Please refer to Sales Advisor for details of your selected plot. Computer generated image shown overleaf. External finishes, landscaping and configuration may vary from plot to plot. Please refer to Sales Advisor for further details. All dimensions are approximate and should not be used for carpet sizes, appliance spaces or furniture. We operate a policy of continuous improvement and individual features such as kitchen and bathroom layouts, doors, windows, garages and elevational treatments may vary from time to time. Consequently these particulars should be treated as general guidance only and do not constitute a contract, part of a contract or a warranty. LU/CB/500/S00/D/01/E.





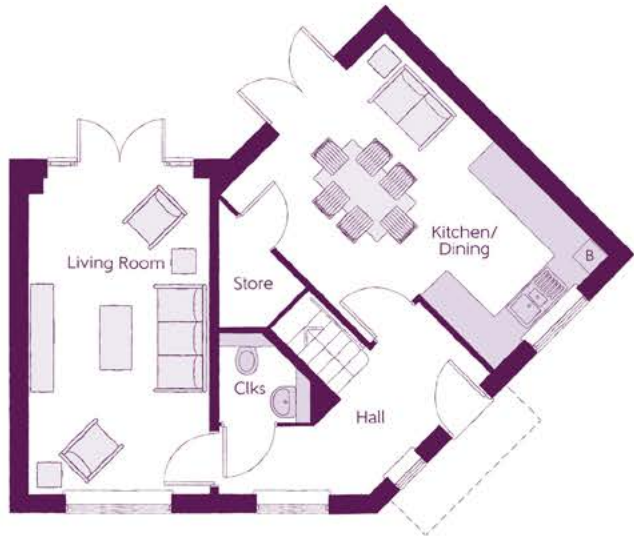
The Foxglove

3 BEDROOM HOME



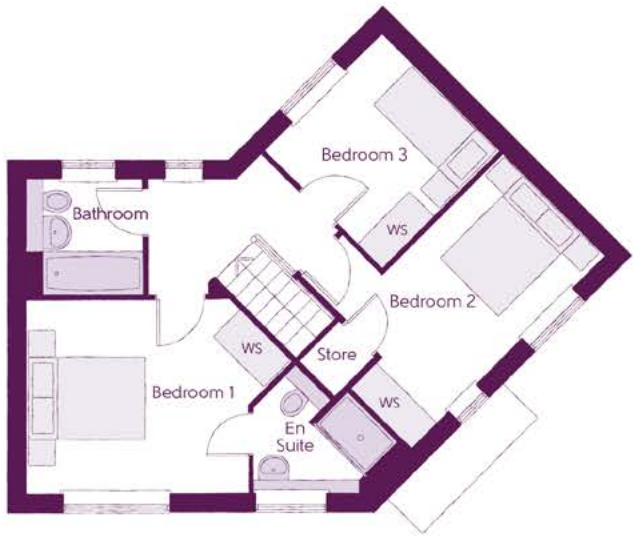
The Foxglove

3 BEDROOM HOME



Ground Floor

<b>Kitchen/Dining</b>	3.76m x 5.18m (max)	12'4" x 17'0" (max)
<b>Living Room</b>	3.00m x 5.19m	9'10" x 17'0"
<b>Cloakroom</b>	1.52m x 1.46m (max) (max)	5'0" x 4'10" (max) (max)



First Floor

<b>Bedroom 1</b>	4.36m x 3.18m (max)	14'4" x 10'5" (max)
<b>Bedroom 1 En Suite</b>	2.24m x 2.09m (max) (max)	7'10" x 6'10" (max) (max)
<b>Bedroom 2</b>	4.50m x 3.29m (max) (max)	14'9" x 10'9" (max) (max)
<b>Bedroom 3</b>	2.72m x 2.76m	8'11" x 9'1"
<b>Bathroom</b>	1.92m x 1.91m	6'3" x 6'3"

Clks - Cloakroom    WS - Wardrobe Space (suggestion only, wardrobe not included)

The items shown in this key may be subject to change, and positions could vary from those indicated on this floorplan. Please refer to Sales Advisor for details of your selected plot. Computer generated image shown overleaf. External finishes, landscaping and configuration may vary from plot to plot. Please refer to Sales Advisor for further details. All dimensions are approximate and should not be used for carpet sizes, appliance spaces or furniture. We operate a policy of continuous improvement and individual features such as kitchen and bathroom layouts, doors, windows, garages and elevational treatments may vary from time to time. Consequently these particulars should be treated as general guidance only and do not constitute a contract, part of a contract or a warranty. LU/CB/500/S00/D/01/E.





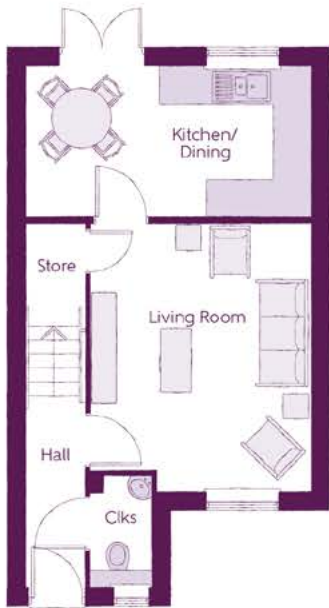
The Betony

3 BEDROOM HOME



# The Betony

3 BEDROOM HOME



Ground Floor

Kitchen/Dining	4.67m x 2.51m	15'4" x 8'3"
Living Room	3.61m x 4.38m (max)	11'10" x 14'5" (max)
Cloakroom	0.98m x 1.84m	3'3" x 6'0"



First Floor

Bedroom 1	2.48m x 3.99m	8'1" x 13'1"
Bedroom 2	2.48m x 2.91m	8'1" x 9'6"
Bedroom 3	2.10m x 2.51m	6'11" x 8'3"
Bathroom	2.10m x 1.90m	6'11" x 6'3"

Clks - Cloakroom    WS - Wardrobe Space (suggestion only, wardrobe not included)

The items shown in this key may be subject to change, and positions could vary from those indicated on this floorplan. Please refer to Sales Advisor for details of your selected plot. Computer generated image shown overleaf. External finishes, landscaping and configuration may vary from plot to plot. Please refer to Sales Advisor for further details. All dimensions are approximate and should not be used for carpet sizes, appliance spaces or furniture. We operate a policy of continuous improvement and individual features such as kitchen and bathroom layouts, doors, windows, garages and elevational treatments may vary from time to time. Consequently these particulars should be treated as general guidance only and do not constitute a contract, part of a contract or a warranty. LU/CB/500/S00/D/01/E.





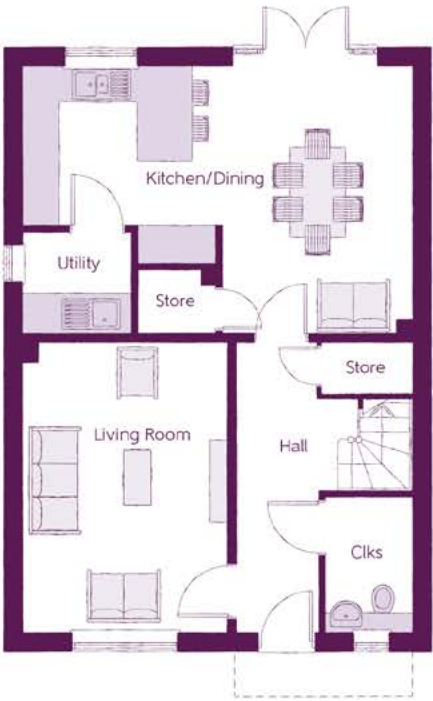
The Ophelia

4 BEDROOM HOME



The Ophelia

4 BEDROOM HOME



Ground Floor

Kitchen/Dining	6.42m x 4.42m (max) (max)	21'1" x 14'6" (max) (max)
Living Room	3.40m x 4.77m	11'2" x 15'8"
Utility	1.78m x 1.66m	5'10" x 5'5"
Cloakroom	1.46m x 2.22m	4'9" x 7'3"



First Floor

Bedroom 1	3.18m x 3.77m (max)	10'5" x 12'5" (max)
Bedroom 1 En Suite	1.55m x 2.05m	5'1" x 6'9"
Bedroom 2	2.73m x 3.34m	9'0" x 11'0"
Bedroom 2 En Suite	1.54m x 2.05m	5'1" x 6'9"
Bedroom 3	3.60m x 2.25m	11'10" x 7'4"
Bedroom 4	3.37m x 2.22m	11'1" x 7'3"
Bathroom	1.98m x 2.15m	6'6" x 7'1"

Clks - Cloakroom    WS - Wardrobe Space (suggestion only, wardrobe not included)

The items shown in this key may be subject to change, and positions could vary from those indicated on this floorplan. Please refer to Sales Advisor for details of your selected plot. Computer generated image shown overleaf. External finishes, landscaping and configuration may vary from plot to plot. Please refer to Sales Advisor for further details. All dimensions are approximate and should not be used for carpet sizes, appliance spaces or furniture. We operate a policy of continuous improvement and individual features such as kitchen and bathroom layouts, doors, windows, garages and elevational treatments may vary from time to time. Consequently these particulars should be treated as general guidance only and do not constitute a contract, part of a contract or a warranty. LU/CB/500/S00/D/01/E.





The Honeysuckle  
4 BEDROOM HOME



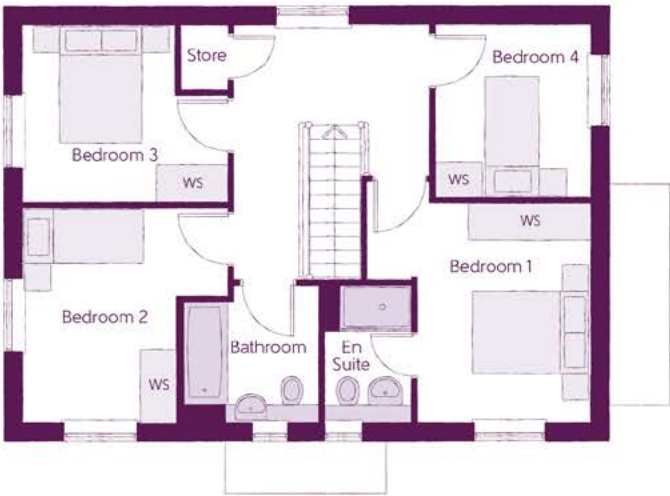
# The Honeysuckle

4 BEDROOM HOME



Ground Floor

Kitchen/Dining	4.39m x 6.54m (inc bay)	14'5" x 21'5" (inc bay)
Living Room	3.16m x 4.49m	10'5" x 14'9"
Snug	2.12m x 2.05m	7'0" x 6'9"
Utility	2.29m x 1.87m	7'6" x 6'2"
Cloakroom	1.42m x 1.90m	4'8" x 6'3"



First Floor

Bedroom 1	3.66m x 3.60m (max) (max)	12'0" x 11'10" (max) (max)
Bedroom 1 En Suite	1.45m x 2.27m	4'9" x 7'5"
Bedroom 2	3.38m x 3.54m (max)	11'1" x 11'7" (max)
Bedroom 3	3.39m x 2.90m (max)	11'1" x 9'6" (max)
Bedroom 4	2.54m x 2.84m	8'4" x 9'4"
Bathroom	2.22m x 2.27m	7'3" x 7'5"

Clks - Cloakroom    WS - Wardrobe Space (suggestion only, wardrobe not included)

The items shown in this key may be subject to change, and positions could vary from those indicated on this floorplan. Please refer to Sales Advisor for details of your selected plot. Computer generated image shown overleaf. External finishes, landscaping and configuration may vary from plot to plot. Please refer to Sales Advisor for further details. All dimensions are approximate and should not be used for carpet sizes, appliance spaces or furniture. We operate a policy of continuous improvement and individual features such as kitchen and bathroom layouts, doors, windows, garages and elevational treatments may vary from time to time. Consequently these particulars should be treated as general guidance only and do not constitute a contract, part of a contract or a warranty. LU/CB/500/S00/D/01/E.





The Albertine

4 BEDROOM HOME



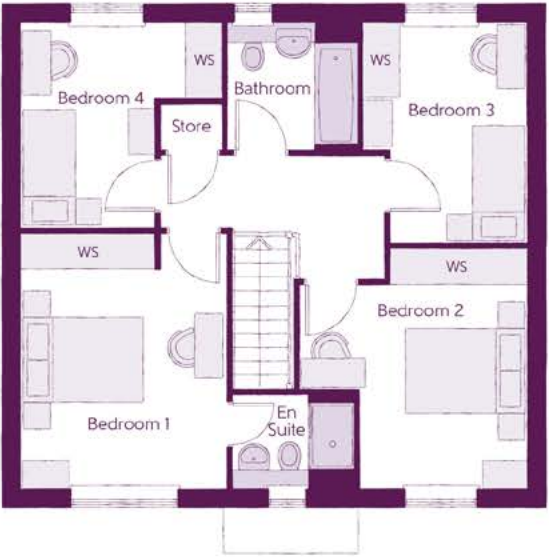
# The Albertine

4 BEDROOM HOME



Ground Floor

Kitchen/Dining	5.88m x 3.37m (max)	19'3" x 11'1" (max)
Family	2.46m x 3.37m	8'1" x 11'1"
Living Room	3.38m x 4.14m	11'1" x 13'7"
Study	2.74m x 2.30m	9'0" x 7'6"
Cloakroom	1.88m x 2.20m	6'2" x 7'3"



First Floor

Bedroom 1	3.38m x 4.20m	11'1" x 13'10"
Bedroom 1 En Suite	2.02m x 1.55m	6'8" x 5'1"
Bedroom 2	3.74m x 3.95m (max) (max)	12'3" x 13'0" (max) (max)
Bedroom 3	2.68m x 3.61m (max)	8'9" x 11'10" (max)
Bedroom 4	3.30m x 3.36m (max)	10'10" x 11'0" (max)
Bathroom	2.17m x 2.07m	7'1" x 6'10"

Clks - Cloakroom    WS - Wardrobe Space (suggestion only, wardrobe not included)

The items shown in this key may be subject to change, and positions could vary from those indicated on this floorplan. Please refer to Sales Advisor for details of your selected plot. Computer generated image shown overleaf. External finishes, landscaping and configuration may vary from plot to plot. Please refer to Sales Advisor for further details. All dimensions are approximate and should not be used for carpet sizes, appliance spaces or furniture. We operate a policy of continuous improvement and individual features such as kitchen and bathroom layouts, doors, windows, garages and elevational treatments may vary from time to time. Consequently these particulars should be treated as general guidance only and do not constitute a contract, part of a contract or a warranty. LU/CB/500/S00/D/01/E.





The Rose

4 BEDROOM HOME



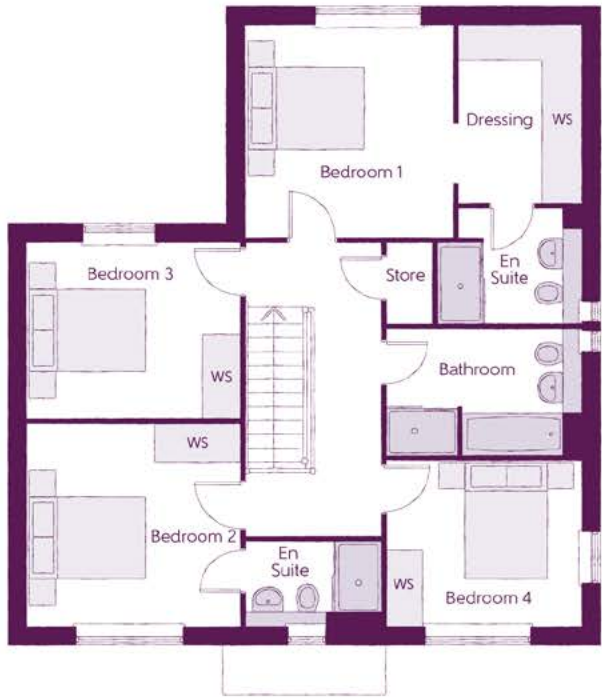
# The Rose

4 BEDROOM HOME



Ground Floor

Kitchen/Dining	5.52m x 6.23m (max)	18'1" x 20'5" (max)
Family	3.21m x 3.59m	10'6" x 11'9"
Living Room	3.45m x 6.31m	11'4" x 20'8"
Utility	1.91m x 1.71m	6'3" x 5'7"
Cloakroom	0.90m x 1.94m	2'11" x 6'4"



First Floor

Bedroom 1	3.42m x 3.45m	11'3" x 11'4"
Dressing	2.01m x 2.91m	6'7" x 9'7"
Bedroom 1 En Suite	2.36m x 1.91m	7'9" x 6'3"
Bedroom 2	3.51m x 3.31m	11'6" x 10'10"
Bedroom 2 En Suite	2.24m x 1.42m	7'4" x 4'8"
Bedroom 3	3.51m x 2.91m	11'6" x 9'7"
Bedroom 4	3.19m x 2.73m	10'6" x 8'11"
Bathroom	3.19m x 2.09m	10'6" x 6'10"

Clks - Cloakroom    WS - Wardrobe Space (suggestion only, wardrobe not included)

The items shown in this key may be subject to change, and positions could vary from those indicated on this floorplan. Please refer to Sales Advisor for details of your selected plot. Computer generated image shown overleaf. External finishes, landscaping and configuration may vary from plot to plot. Please refer to Sales Advisor for further details. All dimensions are approximate and should not be used for carpet sizes, appliance spaces or furniture. We operate a policy of continuous improvement and individual features such as kitchen and bathroom layouts, doors, windows, garages and elevational treatments may vary from time to time. Consequently these particulars should be treated as general guidance only and do not constitute a contract, part of a contract or a warranty. LU/CB/500/S00/D/01/E.





The Aurora  
4 BEDROOM HOME



# The Aurora

4 BEDROOM HOME



Ground Floor

Kitchen/Dining	7.21m x 3.02m (max)	23'8" x 9'11" (max)
Living Room	3.61m x 4.50m (max)	11'10" x 14'9" (max)
Utility	2.35m x 1.71m	7'9" x 5'7"
Cloakroom	0.93m x 1.71m	3'1" x 5'7"
Garage	2.40m x 5.23m	7'10" x 17'2"



First Floor

Bedroom 1	3.61m x 4.29m (max)	1'10" x 14'1" (max)
Bedroom 1 En Suite	2.18m x 1.90m (max)	7'2" x 6'3" (max)
Bedroom 2	2.46m x 3.66m	8'1" x 12'0"
Bedroom 3	2.54m x 3.28m (max)	8'4" x 10'9" (max)
Bedroom 4	2.36m x 3.91m (max)	7'9" x 12'10" (max)
Bathroom	2.13m x 2.61m (max)	7'0" x 8'7" (max)

Clks - Cloakroom    WS - Wardrobe Space (suggestion only, wardrobe not included)

The items shown in this key may be subject to change, and positions could vary from those indicated on this floorplan. Please refer to Sales Advisor for details of your selected plot. Computer generated image shown overleaf. External finishes, landscaping and configuration may vary from plot to plot. Please refer to Sales Advisor for further details. All dimensions are approximate and should not be used for carpet sizes, appliance spaces or furniture. We operate a policy of continuous improvement and individual features such as kitchen and bathroom layouts, doors, windows, garages and elevational treatments may vary from time to time. Consequently these particulars should be treated as general guidance only and do not constitute a contract, part of a contract or a warranty. LU/CB/500/S00/D/01/E.





The Delphinium  
4 BEDROOM HOME



# The Delphinium

4 BEDROOM HOME



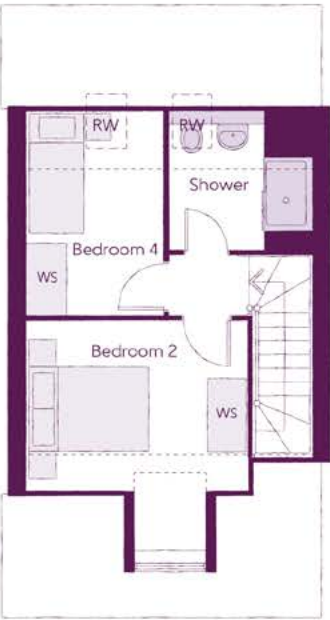
Ground Floor

Kitchen	2.49m x 3.02m	8'2" x 9'11"
Living Room	4.67m x 4.10m (max) (max)	15'4" x 13'5" (max) (max)
Dining Room	2.49m x 2.77m	8'2" x 9'1"
Cloakroom	0.95m x 1.90m	3'1" x 6'3"



First Floor

Bedroom 1	4.67m x 3.37m (max) (max)	15'4" x 11'1" (max) (max)
Bedroom 1 En Suite	1.40m x 2.15m	4'7" x 7'0"
Bedroom 3	2.38m x 3.46m	7'10" x 11'4"
Bathroom	2.20m x 1.90m	7'3" x 6'3"



Second Floor

Bedroom 2	3.63m x 3.77m (inc dormer)	11'11" x 12'4" (inc dormer)
Bedroom 4	2.25m x 3.39m	7'4" x 11'1"
Shower	2.33m x 2.28m	7'8" x 7'6"

Clks - Cloakroom   WS - Wardrobe Space (suggestion only, wardrobe not included)   RW - Roof Window   ---- - Reduced Head Height

The items shown in this key may be subject to change, and positions could vary from those indicated on this floorplan. Please refer to Sales Advisor for details of your selected plot. Computer generated image shown overleaf. External finishes, landscaping and configuration may vary from plot to plot. Please refer to Sales Advisor for further details. All dimensions are approximate and should not be used for carpet sizes, appliance spaces or furniture. We operate a policy of continuous improvement and individual features such as kitchen and bathroom layouts, doors, windows, garages and elevational treatments may vary from time to time. Consequently these particulars should be treated as general guidance only and do not constitute a contract, part of a contract or a warranty. LU/CB/500/S00/D/01/E.



Specification

			2 Bedroom Homes	3 Bedroom Homes	4 Bedroom Homes
FINISHES	Entrance Doors	GRP Insulated Door	•	•	•
	Loft Hatch	Loft Hatch - Hinged Drop Down ** ††	•	•	•
	Ceilings	Crown White Matt Emulsion	•	•	•
	Walls	Crown White Matt Emulsion	•	•	•
	Floors	Concrete Ground Floor / Chipboard First Floor	•	•	•
	Window Cills	White Satin MDF	•	•	•
	Stairs	Timber Stair - White Satin MDF Strings	•	•	•
	Balusters	White Satin Stop Chamfered Balusters	•	•	•
	Newel Posts	White Satin Stop Chamfered Newels	•	•	•
	Newel Caps	White Satin Flat Top Newel Caps	•	•	•
	Handrail	White Satin Heavy Duty Handrail	•	•	•
	Skirting	White Satin 94x14 MDF Grooved & Chamfered	•	•	•
	Architrave	White Satin 69x18 MDF Grooved & Chamfered	•	•	•
	Internal Doors	White Pre Finished Ladder Internal Doors	•	•	•
	Ironmongery	Satin CSL1192 Door Furniture	•	•	•
KITCHEN	Carcass	Premium Grade 18mm 11nk Colour Matched Carcass	•	•	•
	Frontals	Bellway Band B options &&	•	•	•
		Bellway Band C options &&	•	•	•
	Units	Frontal Matching Table Ends	•	•	•
		Unit Framing	•	•	•
	Worktops	40mm Square Edge Worktops with upstand	•	•	•
	Kitchen Sink	Rangemaster Aria Single Bowl SS Sink & Aquapace Tap (inc Sink Liner)	•	•	•
		Rangemaster Aria Bowl & Half SS Sink & Aquapace Tap (inc Sink Liner)	•	•	•
		Rangemaster Glendale Bowl & Half SS Sink & Aquapace Tap (inc Sink Liner)	•	•	•
	Utility Sink	Rangemaster Aria Single Bowl SS Sink & Aquapace Tap (inc Sink Liner)	•	•	•
		Rangemaster Glendale Single Bowl SS Sink & Aquapace Tap (inc Sink Liner)	•	•	•
	Appliances Oven	Electrolux Single Oven KOFQH00BX	•	•	•
		Electrolux Single Oven KOFQH40TX	•	•	•
	Appliances Hob	Electrolux 4 Burner Gas Hob KGS6404X & SS Splashback	•	•	•
		Electrolux 4 Burner Gas Hob KGS6424X & SS Splashback	•	•	•
WET ROOMS	Appliances Extractor	Cooker Hood Extractor LFC316X (recirculating)	•	•	•
	Appliances Microwave	Electrolux Combination Microwave KVLFE46TX	•	•	•
	Appliances Fridge Freezer	Fridge Freezer Space Only	•	•	•
		Electrolux 70/30 Fridge Freezer LNS5LE18S	•	•	•
	Appliance Dishwasher	Removeable Unit (inc Feed & Waste) ††	•	•	•
		Electrolux Dishwasher KEAF7200L	•	•	•
	Appliance Washing Machine	Washing Machine Space Only (inc Feed & Waste)	•	•	•
	Cloaks - WC	Roca DEBBA WC with Concealed Cistern & PL2 Flush Plate #	•	•	•
	Cloaks - Basin	Roca Wash Hand Basin ^^	•	•	•
	Cloaks - Brassware	Bristan PISA Small Basin Chrome Mixer Tap	•	•	•
	Cloaks - Tiling	Band 2 Tiling to WC Boxing, Splashback Tiling to WHB, Flat Edge White Trim	•	•	•
		Band 3 Tiling to WC Boxing, Splashback Tiling to WHB, Flat Edge Chrome Trim	•	•	•
	Bathroom - WC	Roca DEBBA WC with Concealed Cistern & PL2 Flush Plate #	•	•	•
	Bathroom - Basin	Roca DEBBA 500 WHB with Full Pedestal &	•	•	•
		Roca DEBBA 550 WHB with Semi Pedestal &	•	•	•

WET ROOMS	En-Suite - Basin	Roca DEBBA 450 WHB with Full Pedestal	•	•	•
		Roca DEBBA 550 WHB with Semi Pedestal	•	•	•
	En-Suite - Brassware	Bristan PISA Chrome Bath & Basin Mixer Taps	•	•	•
		Bristan SAIL Chrome Bath & Basin Mixer Taps	•	•	•
	En-Suite - Shower Tray	Mira FLIGHT Low Shower Tray with Mira ELEVATE Enclosure ^^	•	•	•
MECHANICAL	En-Suite - Shower	Mira MINIMAL Single Thermostatic Shower ^	•	•	•
	En-Suite - Tiling	1/2 Height Tiling (Band 2) to Wet Walls with Flat Edged White Trim †††	•	•	•
		1/2 Height Tiling (Band 3) to Wet Walls with Flat Edged Chrome Trim †††	•	•	•
	Waste Water Heat Recovery	Waste Water Heat Recovery System ^^	•	•	•
	Boiler	Ideal LOGIC Combination Boiler (Cb) ^^	•	•	•
ELECTRICS	Controls	Ideal LOGIC Boiler & ThermoQ Evocyl HW Cylinder (HOb) ^^^	•	•	•
	Radiators	Honeywell T6R Dual Zone Smart Thermostat	•	•	•
	Towel Warmers	Stelrad Compact Steel Panel Radiators with Grilles	•	•	•
	Ventilation	Flat Chrome to Bathroom	•	•	•
		Window Trickle Vents with Mechanical Extract Fan (system 3) dMEV ‡	•	•	•
EXTERNALS & MISC	Safety - Heat	Heat Detector DET ##	•	•	•
	PV Generation Optimiser	Marlec Solar iBoost ^^	•	•	•
	Safety - Fire	Optical Smoke Detectors LD2 D2 DET	•	•	•
	Safety - Carbon	Carbon Monoxide Alarm (Battery Powered) - Deta	•	•	•
	Consumer Unit	Wylex Consumer Unit	•	•	•
WET ROOMS	Sockets & Switches	Electrum CASA White Fittings	•	•	•
	Lighting	Pendant Fitting to Habitable Rooms	•	•	•
	Lighting - Kitchen	White Recessed Spot Lights	•	•	•
	Lighting - Bathroom & En-Suites	White Recessed Spot Lights	•	•	•
	Lighting - External	External Light Clifton Brushed Steel Up/Down (Front & Rear)	•	•	•
EXTERNALS & MISC	Communications - TV	TV Point to Living Room & Bedroom 1	•	•	•
	Communications - Data	Cat 6 Network Point to Living Room & Study	•	•	•
	Broadband	Ultrafast Fibre Connectivity (Openreach, Virgin Media, Hyperoptic) †††	•	•	•
	Build Method	Masonry ~~~	•	•	•
	Ecological	Hedgehog Highway fencing adaption	•	•	•
EXTERNALS & MISC	Garages Electrics	Light & Power Point to incurtilage Garages ~~~	•	•	•
	Maintenance	External Tap	•	•	•
	Number Plaque	Ashberry Number Plaque	•	•	•
	Footpath & Patio	Grey PCC Flags 450x450x32%	•	•	•
	Garages	Steel Panel Up & Over Canopy Garage Door ~~~	•	•	•
EXTERNALS & MISC	Drives	Block Paviments ~	•	•	•
	Landscaping - Front	Medallion Turf & Landscape Planting ~~~	•	•	•
	Landscaping - Rear	Rotovated Topsoil ~~~	•	•	•
	Renewables	Photovoltaic Array ~~~	•	•	•
	EV Charging Terminal	Universal Socket 7kW * †	•	•	•

\* refer site layout  
\*\* fire rated as necessary  
\*\*\* full height around bath where shower provided as standard  
† electrical infrastructure upgrade maybe required  
†† where layout allows  
††† full height to shower enclosure  
‡ additional mechanical ventilation required to specific plots - liaise with sales executive  
‡‡ at build stage  
‡‡‡ consult with sales executive for specific development details  
^ flow regulator fitted to bath mixer if serving single thermostatic shower & fed via combination boiler  
^^ housetype dependent - liaise with sales executive  
^^^ housetype dependent on particular 4 bed housetypes - liaise with Sales Advisor

# inc soft close mechanism seat on 4 & 5 Bedroom Homes ONLY  
## kitchen only  
### over bath ONLY incorporating MIRA bath screen  
11863.004 where no shower elsewhere in dwelling  
~ plot dependent  
~~ plot specific, refer site layout  
~~~ refer site landscape layout  
& semi recessed basin if AD M4(i) applicable  
&& soft close mechanism to doors & drawers  
&&& where provision of shower tray allows





# It's the start of something new

Welcome to Ashberry Homes, a developer of homes built to exceptional standards in carefully chosen locations, where we place individuality and excellence at the heart of house-building.

At Ashberry Homes, we believe that in order to create homes that are loved, they must be built with expertise, confidence and the utmost care.

Our team of skilled craftsmen work to the highest of standards, making sure that your needs are always the inspiration behind our designs.

What's more, our Personal Touch selection of optional finishes and upgrades allows you to make your new home as unique as you are. This pride in our workmanship extends to the environment, with sustainable features built into every Ashberry home - helping to preserve precious natural resources and ensuring lower energy running costs for you.



“The staff at Ashberry Homes have been so helpful throughout my journey. Moving home can be a stressful time, and they really helped to keep me informed. They are exceptional.

**Jonathan**  
Cherry Fields



“I would recommend buying with Ashberry Homes, as they went above and beyond to ensure the quality of build and service beat our expectations.

**Matt and Katya**  
The Limes

From the moment you visit our sales centre to the second you step into your new Ashberry home, we will be there to offer our guidance and expertise.

Our friendly and professional team will help ensure that your home-buying journey is as straightforward as possible, supporting you through each decision you make. Plus, once you move in, we will still be there if you need us, providing a comprehensive programme of aftercare that you can rely on.

Ashberry Homes abides by The Consumer Code, which is an independent industry code developed to make the home-buying process fairer and more transparent for purchasers.







## Here for you at every step

At Ashberry Homes, we know that buying and selling a home is a time when you need support and guidance, which is why we're here to help.

We strive to give all our customers an enjoyable home-buying experience and help make your dream home a reality by being here for you every step of the way.

Our expert team will be by your side to advise and guide you from the moment you first visit us right through to the completion of your purchase. We'll also be available on moving day to welcome you into your new home, helping to ensure your move goes smoothly. We don't just stop when you have the keys either. Should you need us, our customer care team will be on hand to help with any queries, no matter how small.



## Love your home, not somebody else's

All of our homes are equipped with superior fixtures and fittings, which perfectly complements our focus on design and attention to detail.

Expertly crafted using state-of-the-art materials, your brand new home is finished to a high standard so you can start enjoying it the moment you get your keys.



“ We would recommend Ashberry Homes to others as they build a strong standard of homes. The aftercare was very good to make sure we had settled in.

**Amber and Darren**  
Elizabeth Gardens



## It's the little things that make a house your home

Our Personal Touch selection of optional finishes and fittings puts all the decisions in your hands.

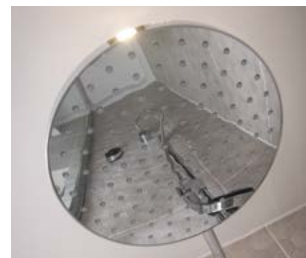
From upgrading our standard fittings to adding additional items, you can make your new home as individual as you are.

Most importantly, we will ensure that your chosen features are expertly fitted and finished, ready for your move-in day.



“ We fell in love with our home the moment we saw it. It was our dream home, right down to the white picket fence outside our front garden.

**Wyon and Tasnova**  
Victoria Gardens





# How to find us

---



Ashberry Homes abides by the New Homes Quality Code (NHQC), an independent industry code established to champion quality new homes and deliver better outcomes for customers.

Ashberry  
Homes

