



Lilibet Gardens

LILIBET GARDENS IS A DEVELOPMENT
OF 3 AND 4-BEDROOM HOMES
LOCATED IN BOLTON,
GREATER MANCHESTER.

Ashberry
Homes

A location perfectly tailored to modern living.

Light-filled layouts with our signature level of specification, close to state-of-the-art leisure amenities and the travel connections to achieve life-work balance.

Middlebrook Retail and Leisure Park - the UK's largest - is conveniently close, with M&S and superstores for everything from sofas and sportswear to pet accessories. Top-venues Hollywood Bowl and Vue are here too, and dining choices including Nando's and Wagamama, Yo! and more. Head into Bolton for Market Place's mall shopping and dining, cinema and Amazonia adventure play for little ones to teenagers - or enjoy Lost Valley's adventure golf in a 'rainforest' as a family. Local Lostock Play School for 2-5s and Lostock Primary are both rated Good, with Bolton Arena's sports village hosting school-holiday camps, junior football and gymnastics, the world -class facilities for all ages to enjoy, while their Tennis Academy nurtures future champions from age three onwards.



“ We had a really good experience with Ashberry and we would definitely recommend them to a friend.

Charlotte and Michael
Ashberry Homes at Pirton Fields

From green spaces to going places

Experience the exceptional

Cheer on Bolton Wanderers at the Stadium, scale new heights at Rock Over Bolton, and enjoy great play at Bolton Golf Club and Regent Park Golf Centre - there's FootGolf there too. Under four miles away, Rivington's Terraced Gardens will draw you to explore pathways and caves, spot its roe deer, enjoy open-air music evenings at the Japanese lake and The Festival of Light's magical woodland trails. Commuters are extremely well-placed, with Preston and Manchester journey times around 30 minutes from Horwich Parkway station. The M61 is easily accessed as are the M6, M62 and M60 Ring Road, with Manchester Airport 24 miles away.





Development Plan

4 Bedroom Homes



The Trillium
Plots 503, 510, 611 & 616



The Lunaria
Plots 569, 570, 572, 574, 576, 581, 592, 594, 595, 599, 613 & 614



The Angelica
Plots 568, 577, 591, 608 & 619



The Jasmine
Plots 502, 509, 552, 553, 565, 566, 604 & 607
571, 573, 575, 585, 597, 600 & 601



The Aurora
Plots 593, 596, 598, 606, 609, 610, 612, 615, 617 & 618

Key to plan

s/s Sub station

bcp Bin collection point

3 Bedroom Homes



The Begonia
Plots 579 & 580



The Verbena
Plots 505, 559, 602 & 603



The Daisy
Plots 501, 504, 508, 551, 554, 555, 556, 563, 567, 578, 582, 586 & 605



The Lysander
Plots 560 & 564



The Heather
Plots 557, 558, 561, 562, 583, 584, 587, 588, 589 & 590

2-3 Bedroom Homes



Affordable Homes

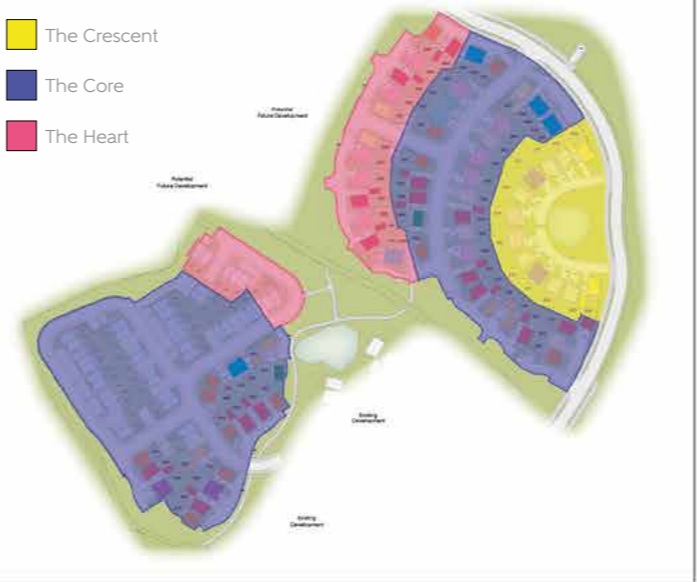


Showhomes/Sales Office

The site plan is drawn to show the relative position of individual properties. NOT TO SCALE. This is a two dimensional drawing and will not show land contours and gradients, boundary treatments, landscaping or local authority street lighting. Footpaths subject to change. For details of individual properties and availability please refer to our Sales Advisor.

Character Area Key Plan

- The Crescent
- The Core
- The Heart



Please speak to our Sales Advisor for the external finishes to the brickwork, roof tiles, which vary across each of the character areas. Please note, some plots will feature Tudor boarding - please refer to the planning layout.





The Trillium

4 BEDROOM HOME



The Trillium

4 BEDROOM HOME



Ground Floor

Kitchen/Dining	5.16m x 3.28m (max)	16'11" x 10'9" (max)
Family	3.63m x 3.28m (max)	11'11" x 10'9" (max)
Living Room	3.50m x 4.38m	11'6" x 14'5"
Utility	1.91m x 2.04m	6'3" x 6'8"
Cloakroom	1.50m x 2.04m	4'11" x 6'8"
Garage	3.07m x 6.11m	10'1" x 20'1"



First Floor

Bedroom 1	4.52m x 5.46m (max)	14'10" x 17'11" (max)
Bedroom 1 En Suite	1.97m x 2.26m	6'6" x 7'5"
Bedroom 2	3.14m x 4.52m (max)	10'4" x 14'10" (max)
Bedroom 2 En Suite	1.99m x 1.41m	6'6" x 4'8"
Bedroom 3	3.33m x 4.02m (max)	10'11" x 13'2" (max)
Bedroom 4	3.12m x 3.46m (max)	10'3" x 11'4" (max)
Bathroom	2.15m x 2.16m	7'1" x 7'1"

The items shown in this key may be subject to change, and positions could vary from those indicated on this floorplan. Please refer to Sales Advisor for details of your selected plot. Computer generated image shown overleaf. External finishes, landscaping and configuration may vary from plot to plot. Please refer to Sales Advisor for further details. All dimensions are approximate and should not be used for carpet sizes, appliance spaces or furniture. We operate a policy of continuous improvement and individual features such as kitchen and bathroom layouts, doors, windows, garages and elevational treatments may vary from time to time. Consequently these particulars should be treated as general guidance only and do not constitute a contract, part of a contract or a warranty. LO/CB/500/S00/D/01/G.



The Lunaria

4 BEDROOM HOME



The Lunaria

4 BEDROOM HOME



Ground Floor

Kitchen/Dining/Family	6.37m x 5.56m (max) (min)	20'11" x 18'3" (max) (min)
Living Room	4.29m x 4.43m	14'1" x 14'6" (max) (min)
Utility	1.62m x 1.78m	5'4" x 5'10" (max) (min)
Cloakroom	1.06m x 1.78m	3'6" x 5'10" (max) (min)
Garage	2.70m x 4.71m	8'10" x 15'5" (max) (min)



First Floor

Bedroom 1	4.29m x 4.89m (max) (min)	14'1" x 16'0" (max) (min)
Bedroom 1 En Suite	3.06m x 1.63m (max) (min)	10'1" x 5'4" (max) (min)
Bedroom 2	3.63m x 3.59m (max) (min)	11'11" x 11'9" (max) (min)
Bedroom 3	3.28m x 3.44m	10'9" x 11'4" (max) (min)
Bedroom 4	3.09m x 3.08m	10'2" x 10'1" (max) (min)
Bathroom	2.15m x 2.23m (max) (min)	7'1" x 7'4" (max) (min)

The items shown in this key may be subject to change, and positions could vary from those indicated on this floorplan. Please refer to Sales Advisor for details of your selected plot. Computer generated image shown overleaf. External finishes, landscaping and configuration may vary from plot to plot. Please refer to Sales Advisor for further details. All dimensions are approximate and should not be used for carpet sizes, appliance spaces or furniture. We operate a policy of continuous improvement and individual features such as kitchen and bathroom layouts, doors, windows, garages and elevational treatments may vary from time to time. Consequently these particulars should be treated as general guidance only and do not constitute a contract, part of a contract or a warranty. FO/CB/500/S00/D/01/D.



The Angelica

4 BEDROOM HOME



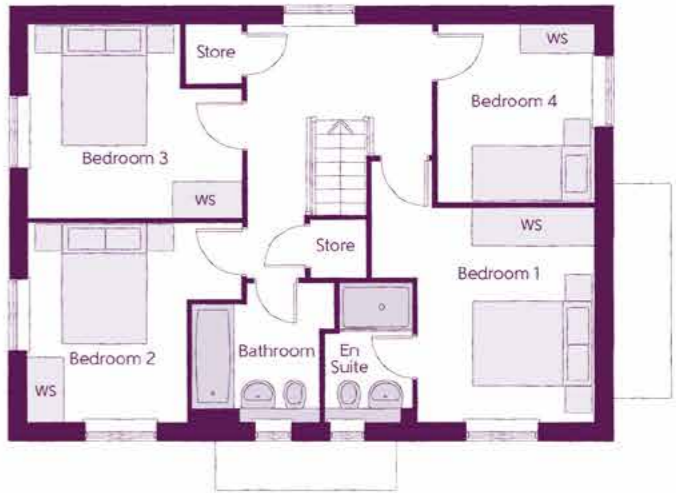
The Angelica

4 BEDROOM HOME



Ground Floor

Kitchen/Dining	4.39m x 6.54m (inc. bay)	14'5" x 21'5" (inc. bay)
Living Room	3.42m x 6.54m	11'3" x 21'5"
Utility	2.03m x 1.87m	6'8" x 6'2"
Cloakroom	1.00m x 1.65m	3'3" x 5'5"



First Floor

Bedroom 1	3.66m x 3.52m (max) (max)	12'0" x 11'7" (max) (max)
Bedroom 1 En Suite	1.44m x 2.25m	4'9" x 7'5"
Bedroom 2	3.53m x 3.27m (max)	11'7" x 10'9" (max)
Bedroom 3	3.53m x 3.18m (max)	11'7" x 10'5" (max)
Bedroom 4	2.58m x 2.93m	8'6" x 9'7"
Bathroom	2.35m x 2.25m (max)	7'9" x 7'5" (max)

Ckls - Cloakroom WS - Wardrobe Space (suggestion only, wardrobe not included)

The items shown in this key may be subject to change, and positions could vary from those indicated on this floorplan. Please refer to Sales Advisor for details of your selected plot. Computer generated image shown overleaf. External finishes, landscaping and configuration may vary from plot to plot. Please refer to Sales Advisor for further details. All dimensions are approximate and should not be used for carpet sizes, appliance spaces or furniture. We operate a policy of continuous improvement and individual features such as kitchen and bathroom layouts, doors, windows, garages and elevational treatments may vary from time to time. Consequently these particulars should be treated as general guidance only and do not constitute a contract, part of a contract or a warranty. BO/CB/500/S00/D/01/K.



The Jasmine

4 BEDROOM HOME



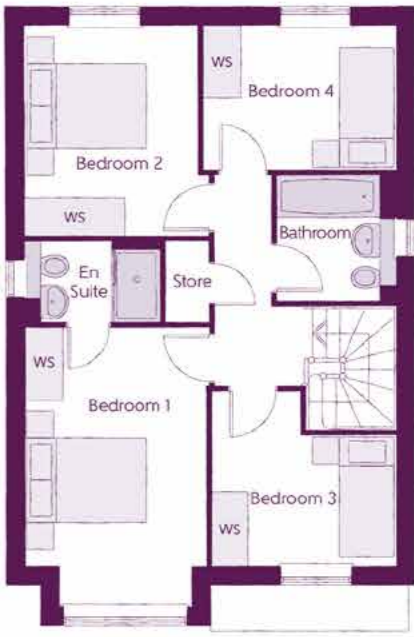
The Jasmine

4 BEDROOM HOME



Ground Floor

Kitchen	3.20m x 3.33m	10'6" x 10'11"
Family/Dining	2.88m x 4.48m	9'6" x 14'8"
Living Room	3.54m x 4.94m (inc. bay)	11'7" x 16'3" (inc. bay)
Utility	1.84m x 1.71m	6'0" x 5'7"
Cloakroom	0.97m x 2.08m	3'2" x 6'10"



First Floor

Bedroom 1	2.96m x 4.59m (inc. bay)	9'9" x 15'1" (inc. bay)
Bedroom 1 En Suite	2.22m x 1.35m	7'4" x 4'5"
Bedroom 2	2.83m x 3.46m	9'3" x 11'4"
Bedroom 3	3.03m x 2.87m (max)	9'11" x 9'5" (max)
Bedroom 4	3.17m x 2.38m	10'5" x 7'10"
Bathroom	1.91m x 2.08m	6'3" x 6'10"

The items shown in this key may be subject to change, and positions could vary from those indicated on this floorplan. Please refer to Sales Advisor for details of your selected plot. Computer generated image shown overleaf. External finishes, landscaping and configuration may vary from plot to plot. Please refer to Sales Advisor for further details. All dimensions are approximate and should not be used for carpet sizes, appliance spaces or furniture. We operate a policy of continuous improvement and individual features such as kitchen and bathroom layouts, doors, windows, garages and elevational treatments may vary from time to time. Consequently these particulars should be treated as general guidance only and do not constitute a contract, part of a contract or a warranty. SC/CB/500/S00/D/01/N.



The Aurora

4 BEDROOM HOME



The Aurora

4 BEDROOM HOME



Ground Floor

Kitchen/Dining	7.21m x 3.02m (max) (max)	23'8" x 9'11" (max) (max)
Living Room	3.61m x 4.50m	11'10" x 14'9"
Utility	2.35m x 1.71m	7'9" x 5'7"
Cloakroom	0.93m x 1.71m	3'1" x 5'7"
Garage	2.40m x 5.23m	7'10" x 17'2"



First Floor

Bedroom 1	3.61m x 4.29m (max) (max)	11'10" x 14'1" (max) (max)
Bedroom 1 En Suite	2.18m x 2.11m (max) (max)	7'2" x 6'11" (max) (max)
Bedroom 2	2.47m x 3.66m	8'1" x 12'0"
Bedroom 3	2.54m x 3.28m (max)	8'4" x 10'9" (max)
Bedroom 4	2.36m x 3.91m (max) (max)	7'9" x 12'10" (max) (max)
Bathroom	2.13m x 2.61m (max) (max)	7'0" x 8'7" (max) (max)

The items shown in this key may be subject to change, and positions could vary from those indicated on this floorplan. Please refer to Sales Advisor for details of your selected plot. Computer generated image shown overleaf. External finishes, landscaping and configuration may vary from plot to plot. Please refer to Sales Advisor for further details. All dimensions are approximate and should not be used for carpet sizes, appliance spaces or furniture. We operate a policy of continuous improvement and individual features such as kitchen and bathroom layouts, doors, windows, garages and elevational treatments may vary from time to time. Consequently these particulars should be treated as general guidance only and do not constitute a contract, part of a contract or a warranty. FA/CB/500/S00/D/01/F.



The Begonia

3 BEDROOM HOME



The Begonia

3 BEDROOM HOME



Ground Floor

Kitchen/Dining/Family	6.42m x 3.51m (max)	21'1" x 11'6" (max)
Living Room	3.16m x 4.45m	10'4" x 14'7"
Cloakroom	2.05m x 1.15m	6'9" x 3'9"
Garage	3.10m x 6.09m (max)	10'2" x 20'0" (max)



First Floor

Bedroom 1	4.09m x 4.23m (max)	13'5" x 13'11" (max)
Bedroom 1 En Suite	2.25m x 2.10m (max)	7'4" x 6'11" (max)
Bedroom 2	3.04m x 3.54m	10'0" x 11'7"
Bedroom 3	3.30m x 2.91m	10'10" x 9'7"
Bathroom	2.20m x 2.04m	7'3" x 6'8"

The items shown in this key may be subject to change, and positions could vary from those indicated on this floorplan. Please refer to Sales Advisor for details of your selected plot. Computer generated image shown overleaf. External finishes, landscaping and configuration may vary from plot to plot. Please refer to Sales Advisor for further details. All dimensions are approximate and should not be used for carpet sizes, appliance spaces or furniture. We operate a policy of continuous improvement and individual features such as kitchen and bathroom layouts, doors, windows, garages and elevational treatments may vary from time to time. Consequently these particulars should be treated as general guidance only and do not constitute a contract, part of a contract or a warranty. SY/CB/500/S00/D/03/H.



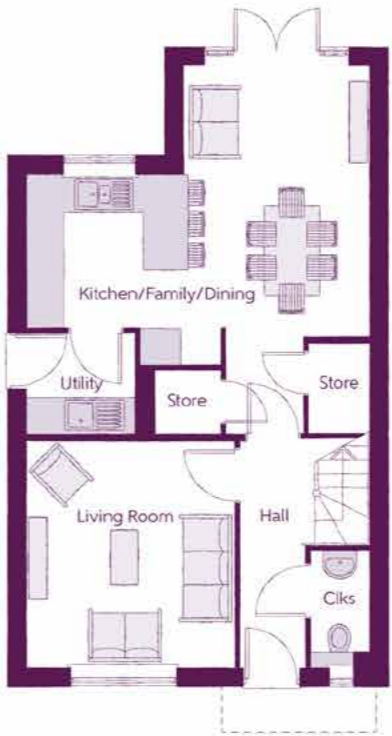
The Verbena

3 BEDROOM HOME



The Verbena

3 BEDROOM HOME



Ground Floor

Kitchen/Family/Dining	5.64m x 6.05m (max) (max)	18'6" x 19'10" (max) (max)
Living Room	3.42m x 3.71m	11'3" x 12'2"
Utility	1.78m x 1.66m	5'10" x 5'5"
Cloakroom	0.96m x 1.91m	3'2" x 6'3"



First Floor

Bedroom 1	3.44m x 3.93m (max)	11'3" x 12'11" (max)
Bedroom 1 En Suite	1.98m x 1.46m	6'6" x 4'9"
Bedroom 2	2.81m x 4.09m (max)	9'3" x 13'5" (max)
Bedroom 3	2.74m x 2.74m	9'0" x 9'0"
Bathroom	2.11m x 1.91m	6'11" x 6'3"

The items shown in this key may be subject to change, and positions could vary from those indicated on this floorplan. Please refer to Sales Advisor for details of your selected plot. Computer generated image shown overleaf. External finishes, landscaping and configuration may vary from plot to plot. Please refer to Sales Advisor for further details. All dimensions are approximate and should not be used for carpet sizes, appliance spaces or furniture. We operate a policy of continuous improvement and individual features such as kitchen and bathroom layouts, doors, windows, garages and elevational treatments may vary from time to time. Consequently these particulars should be treated as general guidance only and do not constitute a contract, part of a contract or a warranty. MA/CB/500/S00/D/01/Q.



The Daisy
3 BEDROOM HOME



The Daisy
3 BEDROOM HOME



Ground Floor

Kitchen/Dining	2.71m x 5.64m	8'11" x 18'6"
Living Room	3.01m x 5.64m	9'10" x 18'6"
Utility	1.98m x 1.32m	6'6" x 4'4"
Cloakroom	0.95m x 1.51m	3'1" x 4'11"



First Floor

Bedroom 1	2.77m x 4.07m	9'1" x 13'4"
Bedroom 1 En Suite	2.77m x 1.48m	9'1" x 4'10"
Bedroom 2	2.79m x 3.07m	9'2" x 10'1"
Bedroom 3	3.03 m x 2.48m	9'11" x 8'2"
Bathroom	2.26m x 1.92m	7'5" x 6'4"

The items shown in this key may be subject to change, and positions could vary from those indicated on this floorplan. Please refer to Sales Advisor for details of your selected plot. Computer generated image shown overleaf. External finishes, landscaping and configuration may vary from plot to plot. Please refer to Sales Advisor for further details. All dimensions are approximate and should not be used for carpet sizes, appliance spaces or furniture. We operate a policy of continuous improvement and individual features such as kitchen and bathroom layouts, doors, windows, garages and elevational treatments may vary from time to time. Consequently these particulars should be treated as general guidance only and do not constitute a contract, part of a contract or a warranty. LY/CB/500/S00/D/01/C.



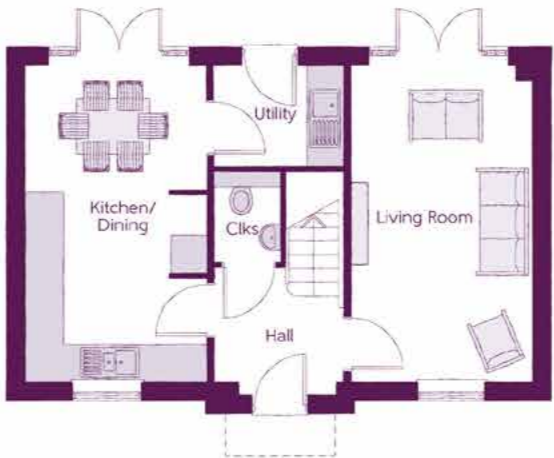
The Lysander

3 BEDROOM HOME



The Lysander

3 BEDROOM HOME



Ground Floor

Kitchen/Dining	2.96m x 5.19m	9'8" x 17'0"
Living Room	2.96m x 5.19m	9'8" x 17'0"
Utility	2.13m x 1.62m	7'0" x 5'4"
Cloakroom	1.07m x 1.53m	3'6" x 5'0"



First Floor

Bedroom 1	3.02m x 3.12m	9'11" x 10'3"
Bedroom 1 En Suite	2.14m x 1.62m	7'0" x 5'4"
Bedroom 2	4.18m x 2.68m	13'8" x 8'9"
Bedroom 3	3.10m x 2.42m	10'2" x 7'11"
Bathroom	1.91m x 1.98m	6'3" x 6'6"

The items shown in this key may be subject to change, and positions could vary from those indicated on this floorplan. Please refer to Sales Advisor for details of your selected plot. Computer generated image shown overleaf. External finishes, landscaping and configuration may vary from plot to plot. Please refer to Sales Advisor for further details. All dimensions are approximate and should not be used for carpet sizes, appliance spaces or furniture. We operate a policy of continuous improvement and individual features such as kitchen and bathroom layouts, doors, windows, garages and elevational treatments may vary from time to time. Consequently these particulars should be treated as general guidance only and do not constitute a contract, part of a contract or a warranty. QU/CB/500/S00/D/01/K.



The Heather

3 BEDROOM HOME



The Heather

3 BEDROOM HOME



Ground Floor

Kitchen/Dining	4.78m (max) x 3.45m (max)	15'8" (max) x 11'4" (max)
Living Room	3.68m (max) x 5.14m (max)	12'1" (max) x 16'10" (max)
Cloakroom	1.01m x 1.66m	3'4" x 5'5"



First Floor

Bedroom 1	3.29m (max) x 3.34m (max)	10'10" (max) x 11'0" (max)
Bedroom 1 En Suite	1.40m x 2.43m	4'7" x 8'0"
Bedroom 2	2.52m x 3.09m	8'3" x 10'2"
Bedroom 3	2.17m x 2.04m	7'1" x 6'8"
Bathroom	2.52m x 1.97m	8'3" x 6'5"

The items shown in this key may be subject to change, and positions could vary from those indicated on this floorplan. Please refer to Sales Advisor for details of your selected plot. Computer generated image shown overleaf. External finishes, landscaping and configuration may vary from plot to plot. Please refer to Sales Advisor for further details. All dimensions are approximate and should not be used for carpet sizes, appliance spaces or furniture. We operate a policy of continuous improvement and individual features such as kitchen and bathroom layouts, doors, windows, garages and elevational treatments may vary from time to time. Consequently these particulars should be treated as general guidance only and do not constitute a contract, part of a contract or a warranty. TA/CB/500/S00/S/01/L.

Specification

FINISHES	Entrance Doors	GRP Insulated Door	●	●
	Loft Hatch	Loft Hatch – Hinged Drop Down ** ††	●	●
	Ceilings	Crown White Matt Emulsion	●	●
	Walls	Crown White Matt Emulsion	●	●
	Floors	Concrete Ground Floor / Chipboard First Floor	●	●
	Window Cills	White Gloss MDF	●	●
	Stairs	Timber Stair – White Gloss MDF Strings	●	●
	Balusters	White Gloss Stop Chamfered Balusters	●	●
	Newel Posts	White Gloss Stop Chamfered Newels	●	●
	Newel Caps	Ash Flat Top Newel Caps	●	●
	Handrail	Ash Heavy Duty Handrail	●	●
	Skirting	White Gloss 120x14 MDF Grooved & Chamfered	●	●
	Architrave	White Gloss 69x18 MDF Grooved & Chamfered	●	●
	Internal Doors	White Pre Finished Vertical Panel Internal Doors	●	●
	Ironmongery	Chrome SR700 Door Furniture	●	●

MECHANICAL	Boiler	Ideal LOGIC Combination Boiler (Cb)	●	●
		Ideal LOGIC Combination Boiler (Cb) - The Lunaria, Angelica, Jasmine and Aurora housetypes only		●
		Ideal LOGIC Boiler & ThermaQ Evocyl HW Cylinder (HOb)		●
	Controls	Dual Zoned 3 way Heating Programmer Wi-Fi	●	●
		Dual Zoned 3 way Heating Programmer & Room Thermostat HOb Wi-Fi		●
	Radiators	Stelrad Compact Steel Panel Radiators with Grilles	●	●
	Towel Warmers	Flat Chrome to Bathroom Only		●
	Ventilation	Window Trickle Ventilators with Mechanical Extract Fans (system 1)	●	●

* refer to site layout
** fire rated as necessary
*** full height around bath where shower provided as standard
† electrical infrastructure upgrade may be required
†† where layout allows
††† full height to shower enclosure
Information correct at time of going to print. In the event of product discontinuation or issues with stock availability Bellway will always fit a suitable alternative.

‡‡ flow regulator fitted to bath mixer if serving single thermostatic shower & fed via combination boiler
‡‡‡ housetype dependent
^ inc soft close mechanism seat on 4 & 5 Bedroom Homes ONLY
^^ over bath ONLY incorporating MIRA bath screen 1.1863.004 where no shower elsewhere in dwelling
^^^ plot dependent

plot specific, refer to site layout
refer to site landscape layout
semi recessed basin if AD M4(ii) applicable
~ soft close mechanism to doors & drawers
~~ where provision of shower tray allows
~~~ where shown on layouts

|         |                           |                                                                    |   |   |
|---------|---------------------------|--------------------------------------------------------------------|---|---|
| KITCHEN | Carcass                   | Premium Grade 18mm thk Colour Matched Carcass                      | ● | ● |
|         | Frontals                  | Ashberry Band B options ~                                          | ● | ● |
|         |                           | Ashberry Band C options ~                                          |   | ● |
|         | Units                     | Frontal Matching Table Ends                                        | ● | ● |
|         |                           | Unit Framing                                                       |   | ● |
|         | Worktops                  | 40mm Square Edge Worktops with Upstand                             | ● | ● |
|         | Kitchen Sink              | Leisure Eaton Bowl & Half SS Sink & Aquamono Tap (inc Sink Liner)  | ● | ● |
|         |                           | Leisure Albion Bowl & Half SS Sink & Aquamono Tap (inc Sink Liner) |   | ● |
|         | Utility Sink              | Leisure Eaton Single Bowl SS Sink & Aquamono Tap (inc Sink Liner)  | ● | ● |
|         |                           | Leisure Albion Single Bowl SS Sink & Aquamono Tap (inc Sink Liner) |   | ● |
|         | Appliances Oven           | Zanussi Single Oven ZOHHE2X2                                       | ● | ● |
|         |                           | Zanussi Single Oven ZOHNX3X1                                       |   | ● |
|         | Appliances Hob            | Zanussi 4 Burner Gas Hob ZGNN640X & SS Splashback                  | ● | ● |
|         |                           | Zanussi 4 Burner Gas Hob ZGNN642X & SS Splashback                  |   | ● |
|         | Appliances Extractor      | Cooker Hood Extractor LFC316X                                      | ● | ● |
|         | Appliances Microwave      | Zanussi Combination Microwave ZVENM6X1                             |   | ● |
|         | Appliances Fridge Freezer | Fridge Freezer Space Only                                          | ● | ● |
|         |                           | Zanussi 70/30 Fridge Freezer ZNLN18FS1                             |   | ● |
|         | Appliance Dishwasher      | Removable Unit (inc Feed & Waste) ‡                                | ● | ● |
|         |                           | Zanussi Dishwasher ZDLN1511                                        |   | ● |
|         | Appliance Washing Machine | Washing Machine Space Only (inc Feed & Waste)                      | ● | ● |

Specification

|          |                        |                                                                             |   |   |
|----------|------------------------|-----------------------------------------------------------------------------|---|---|
| WETROOMS | Cloaks - WC            | Roca DEBBA WC with Concealed Cistern & PL2 Flush Plate ^                    | ● | ● |
|          | Cloaks - Basin         | Roca Wash Hand Basin ‡‡‡                                                    | ● | ● |
|          | Cloaks - Brassware     | Bristan PISA Small Basin Chrome Mixer Tap                                   | ● | ● |
|          | Cloaks - Tiling        | Band 2 Tiling to WC Boxing, Splashback Tiling to WHB, Flat Edge Chrome Trim | ● | ● |
|          |                        | Band 3 Tiling to WC Boxing, Splashback Tiling to WHB, Flat Edge Chrome Trim |   | ● |
|          | Bathroom - WC          | Roca DEBBA WC with Concealed Cistern & PL2 Flush Plate ^                    | ● | ● |
|          | Bathroom - Basin       | Roca DEBBA 500 WHB with Full Pedestal ###                                   | ● | ● |
|          |                        | Roca DEBBA 550 WHB with Semi Pedestal ###                                   |   | ● |
|          | Bathroom - Bath        | Roca OSLO Acrylic Bath & Rigid Bath Panel                                   | ● | ● |
|          | Bathroom - Brassware   | Bristan PISA Chrome Bath & Basin Mixer Taps                                 | ● | ● |
|          |                        | Bristan SAIL Chrome Bath & Basin Mixer Taps                                 |   | ● |
|          | Bathroom - Shower Tray | Mira FLIGHT Low Shower Tray with Mira ELEVATE Enclosure ‡‡‡                 | ● | ● |
|          | Bathroom - Shower      | Mira MINIMAL Single Thermostatic Shower ^^                                  | ● | ● |
|          |                        | Mira MINIMAL Single Thermostatic Shower ~~                                  |   | ● |
|          | Bathroom - Tiling      | 1/2 Height Tiling (Band 2) to Wet Walls with Flat Edged Chrome Trim *** ††† | ● | ● |
|          |                        | 1/2 Height Tiling (Band 3) to Wet Walls with Flat Edged Chrome Trim *** ††† |   | ● |
|          | En Suite - WC          | Roca DEBBA WC with Concealed Cistern & PL2 Flush Plate ^                    | ● | ● |
|          | En Suite - Basin       | Roca DEBBA 450 WHB with Full Pedestal                                       | ● | ● |
|          |                        | Roca DEBBA 550 WHB with Semi Pedestal                                       |   | ● |
|          | En Suite - Brassware   | Bristan PISA Chrome Bath & Basin Mixer Taps                                 | ● | ● |
|          |                        | Bristan SAIL Chrome Bath & Basin Mixer Taps                                 |   | ● |
|          | En Suite - Shower Tray | Mira FLIGHT Low Shower Tray with Mira ELEVATE Enclosure ‡‡‡                 | ● | ● |
|          | En Suite - Shower      | Mira MINIMAL Single Thermostatic Shower ‡‡                                  | ● | ● |
|          | En Suite - Tiling      | 1/2 Height Tiling (Band 2) to Wet Walls with Flat Edged Chrome Trim †††     | ● | ● |
|          |                        | 1/2 Height Tiling (Band 3) to Wet Walls with Flat Edged Chrome Trim †††     |   | ● |

|           |                                 |                                                               |   |   |
|-----------|---------------------------------|---------------------------------------------------------------|---|---|
| ELECTRICS | Home Working                    | Dedicated Power, USB & Data points                            | ● | ● |
|           | Safety - Heat                   | Heat Detector DET ~~~                                         | ● | ● |
|           | Safety - Fire                   | Optical Smoke Detectors LD2 D2 DET                            | ● | ● |
|           | Safety - Carbon                 | Fireblitz FHCO-BH Carbon Monoxide Detector                    | ● | ● |
|           | Consumer Unit                   | Wylex Consumer Unit                                           | ● | ● |
|           | Sockets & Switches              | Electrium CASA White Fittings                                 | ● | ● |
|           | USB Locations                   | Kitchen, Lounge & Bedroom 1 ONLY                              | ● | ● |
|           | Shaver                          | Bathroom ONLY                                                 | ● | ● |
|           | Lighting                        | Pendant Fitting to Habitable Rooms                            | ● | ● |
|           | Lighting - Kitchen              | Brushed Chrome Recessed Spot Lights                           | ● | ● |
|           | Lighting - Bathroom & En Suites | Brushed Chrome Recessed Spot Lights                           | ● | ● |
|           | Lighting - External             | External Light Clifton Brushed Steel Up/Down (Front & Rear)   | ● | ● |
|           | Security - Carbon               | Honeywell XC70 Carbon Monoxide Detector                       | ● | ● |
|           | Communications - TV             | TV Point to Living Room, Family, Bedroom 1 & Study            | ● | ● |
|           | Communications - Voice          | Telephone Point to Lounge                                     | ● | ● |
|           | Communications - Data           | Cat 6 Network Point to Living Room, Family, Bedroom 1 & Study | ● | ● |
|           | Communications - Satellite      | Dual Connection Satellite Points to Living Room               | ● | ● |
|           | Broadband                       | Ultrafast Fibre Connectivity Openreach                        | ● | ● |

|                  |                      |                                              |   |   |
|------------------|----------------------|----------------------------------------------|---|---|
| EXTERNALS & MISC | Build Method         | Masonry #                                    | ● | ● |
|                  | Ecological           | Hedgehog Highway fencing adaption            | ● | ● |
|                  | Garage Electrics     | Light & Power Point to incurtilage Garages # | ● | ● |
|                  | Maintenance          | External Tap                                 | ● | ● |
|                  | Number Plaque        | Artisan Number Plaque                        | ● | ● |
|                  | Footpath & Patio     | Grey PCC Flags 450x450x32’s                  | ● | ● |
|                  | Garages              | Steel Panel Up & Over Canopy Garage Door #   | ● | ● |
|                  | Drives               | Bitmac Black ^^^                             | ● | ● |
|                  | Landscaping - Front  | Medallion Turf & Landscape Planting ##       | ● | ● |
|                  | Landscaping - Rear   | Rotovated Topsoil ##                         | ● | ● |
|                  | EV Charging Terminal | ME Zappi 7kw Universal * †                   | ● | ● |

Information correct at time of going to print. In the event of product discontinuation or issues with stock availability Ashberry will always fit a suitable alternative.



# It's the start of something new

Welcome to Ashberry Homes, a developer of homes built to exceptional standards in carefully chosen locations, where we place individuality and excellence at the heart of house-building.

At Ashberry Homes, we believe that in order to create homes that are loved, they must be built with expertise, confidence and the utmost care.

Our team of skilled craftsmen work to the highest of standards, making sure that your needs are always the inspiration behind our designs.

What's more, our Personal Touch selection of optional finishes and upgrades allows you to make your new home as unique as you are. This pride in our workmanship extends to the environment, with sustainable features built into every Ashberry home - helping to preserve precious natural resources and ensuring lower energy running costs for you.



“The staff at Ashberry Homes have been so helpful throughout my journey. Moving home can be a stressful time, and they really helped to keep me informed. They are exceptional.

**Jonathan**  
Cherry Fields



“I would recommend buying with Ashberry Homes, as they went above and beyond to ensure the quality of build and service beat our expectations.

**Matt and Katya**  
The Limes

From the moment you visit our sales centre to the second you step into your new Ashberry home, we will be there to offer our guidance and expertise.

Our friendly and professional team will help ensure that your home-buying journey is as straightforward as possible, supporting you through each decision you make. Plus, once you move in, we will still be there if you need us, providing a comprehensive programme of aftercare that you can rely on.

Ashberry Homes abides by The Consumer Code, which is an independent industry code developed to make the home-buying process fairer and more transparent for purchasers.





## Here for you at every step

At Ashberry Homes, we know that buying and selling a home is a time when you need support and guidance, which is why we're here to help.

We strive to give all our customers an enjoyable home-buying experience and help make your dream home a reality by being here for you every step of the way.

Our expert team will be by your side to advise and guide you from the moment you first visit us right through to the completion of your purchase. We'll also be available on moving day to welcome you into your new home, helping to ensure your move goes smoothly. We don't just stop when you have the keys either. Should you need us, our customer care team will be on hand to help with any queries, no matter how small.



## Love your home, not somebody else's

All of our homes are equipped with superior fixtures and fittings, which perfectly complements our focus on design and attention to detail.

Expertly crafted using state-of-the-art materials, your brand new home is finished to a high standard so you can start enjoying it the moment you get your keys.

“ We would recommend Ashberry Homes to others as they build a strong standard of homes. The aftercare was very good to make sure we had settled in.

**Amber and Darren**  
Elizabeth Gardens

## It's the little things that make a house your home

Our Personal Touch selection of optional finishes and fittings puts all the decisions in your hands.

From upgrading our standard fittings to adding additional items, you can make your new home as individual as you are.

Most importantly, we will ensure that your chosen features are expertly fitted and finished, ready for your move-in day.



“ We fell in love with our home the moment we saw it. It was our dream home, right down to the white picket fence outside our front garden.

**Wyon and Tasnova**  
Victoria Gardens



# How to find us

---



Ashberry Homes abides by the New Homes Quality Code (NHQC), an independent industry code established to champion quality new homes and deliver better outcomes for customers.

Ashberry  
Homes

